



Parks

50 Kent Bushwick Inlet Park

Located on Kent Avenue between North 11th Street
and North 12th Street, in Bushwick Inlet Park
in the Borough of Brooklyn.

Community Board 1
November 01, 2018
Preliminary Design

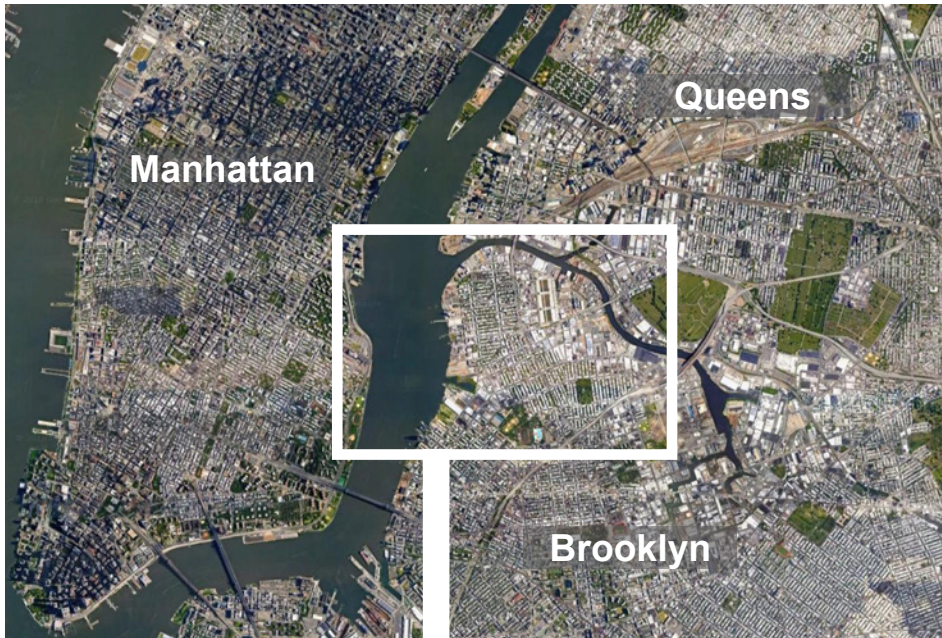


Total Budget: \$7.7m
Mayor, Bill de Blasio - \$7.7m FY17

Project Size: 1.89 acres

Goals

- Provide a large passive space with integrated landforms that will create and frame views of the East River and Manhattan
- Create the opportunity for a flexible space
- Provide an accessible and welcoming park entrance
- Provide densely planted trees for shade that will provide sense of privacy while maintaining a safe and secure park
- Integrate native plantings throughout the park, and green infrastructure when possible
- Ensure the final design of the project works seamlessly with the future park phases so that the entire waterfront maintains cohesiveness and connectivity of the 2009 Greenpoint Williamsburg Open Space Master Plan



City

NTS



Neighborhood

NTS



Site

0' 100' 200'

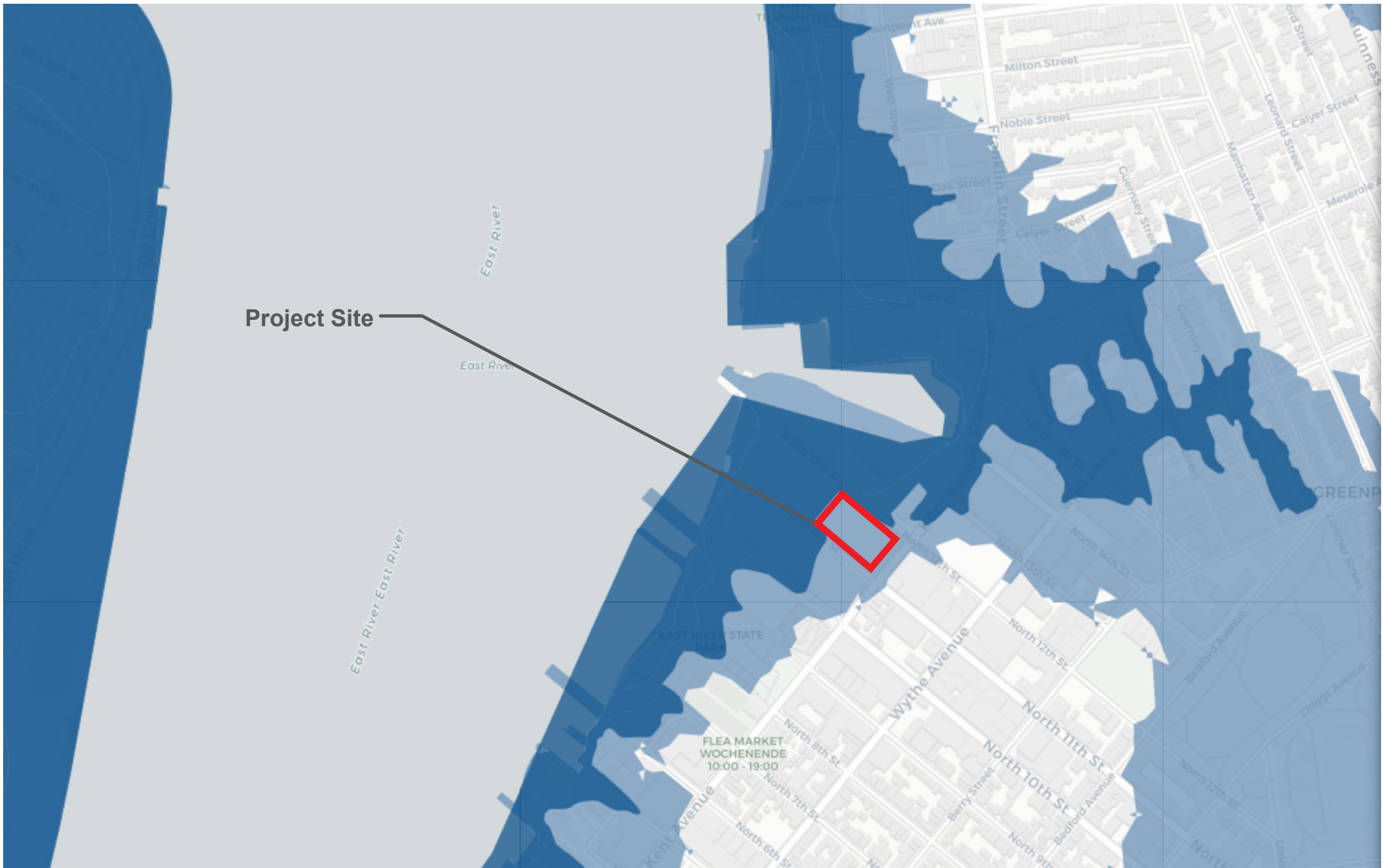


NYC Parks




Stantec 50 Kent-Bushwick Inlet Park | Project Location






Flood Hazard Zones

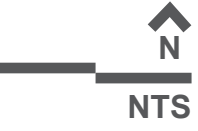
2015 Preliminary 100-year Floodplain

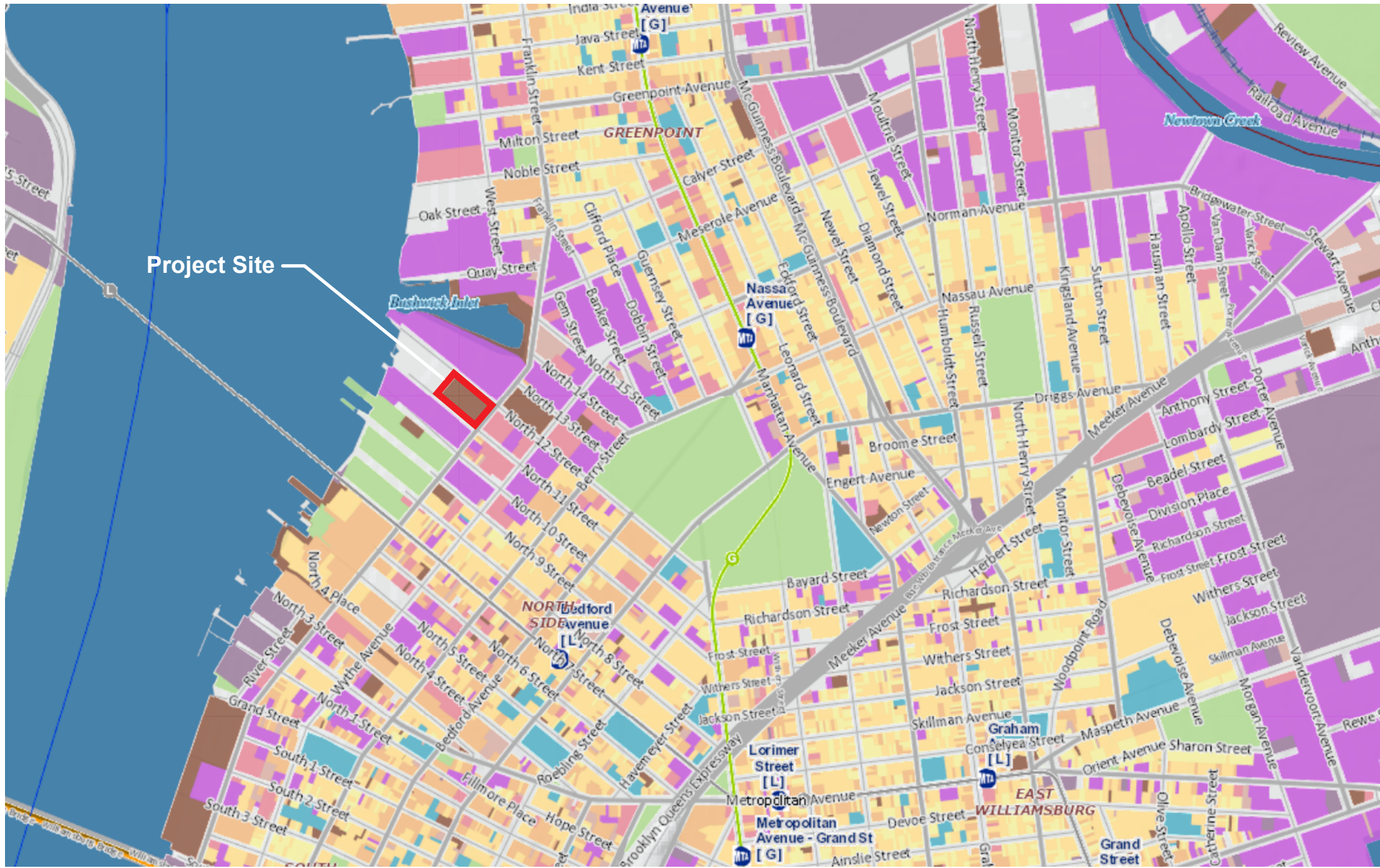
 1% Annual Chance Floodplain (100 Year Floodplain) The area that has a 1% chance of flooding in any given year.

2050s Projected 100-year Floodplain

 The potential areas that could be impacted by the 100-Year flood in the 2050s based on projections of the high-estimate 90th percentile sea level rise scenario (NYC Panel on Climate Change (NPCC) 2015 data).

Source:
 NYC Office of Resiliency and Recovery
<https://maps.nyc.gov/resiliency/>





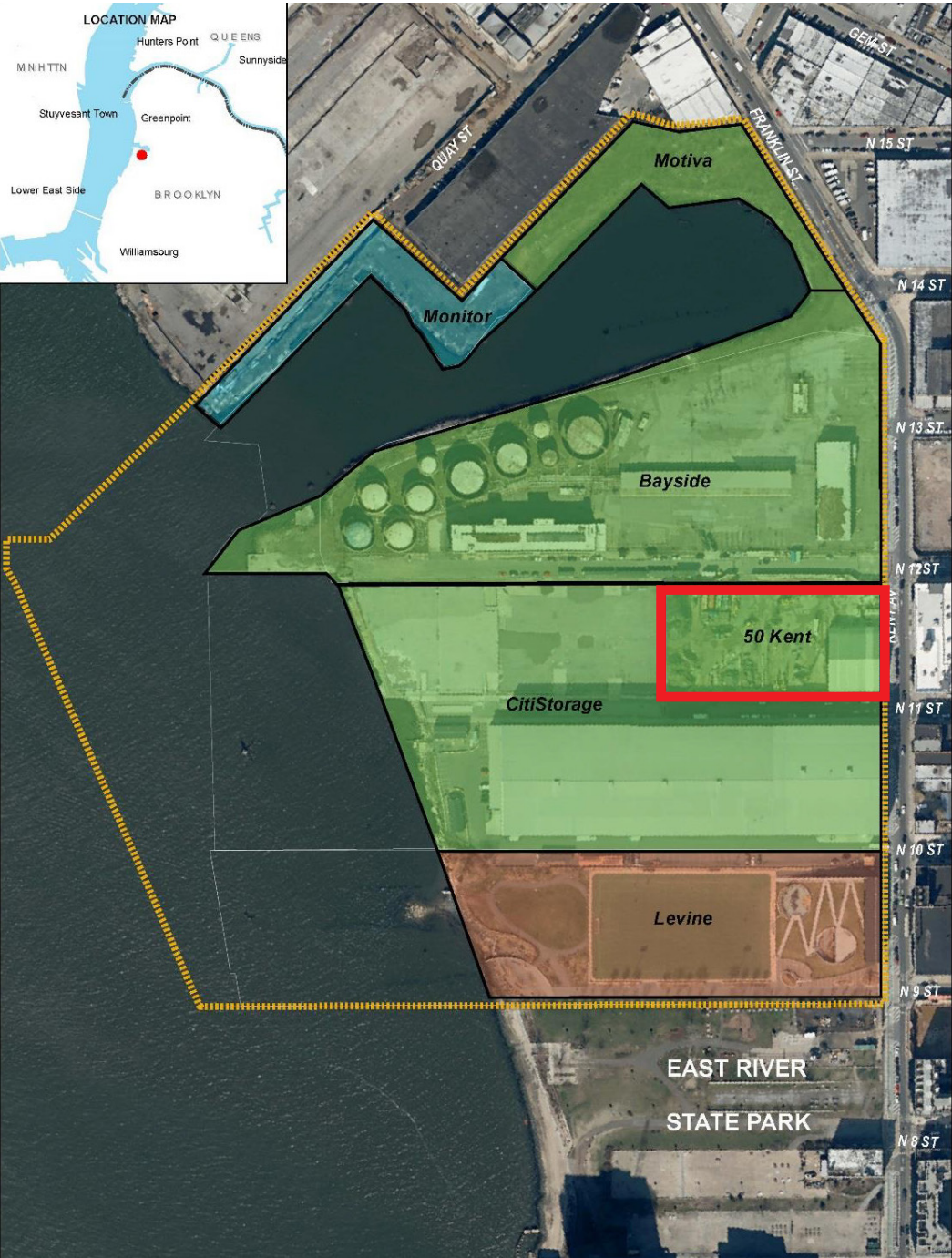
Land Use Categories

- 1 And 2 Family Residential
- Multi-Family Residential
- Mixed Use
- Open Space And Outdoor Recreation
- Commercial
- Institutional
- Industrial
- Parking
- Transportation / Utilities
- Vacant Lots









Legend

- Project Site
- Area mapped as parkland on 03/14/05
- Area under the jurisdiction of Parks and improved as parkland
- Area under the jurisdiction of Parks but not yet improved
- Proposed site for the Greenpoint Monitor Museum

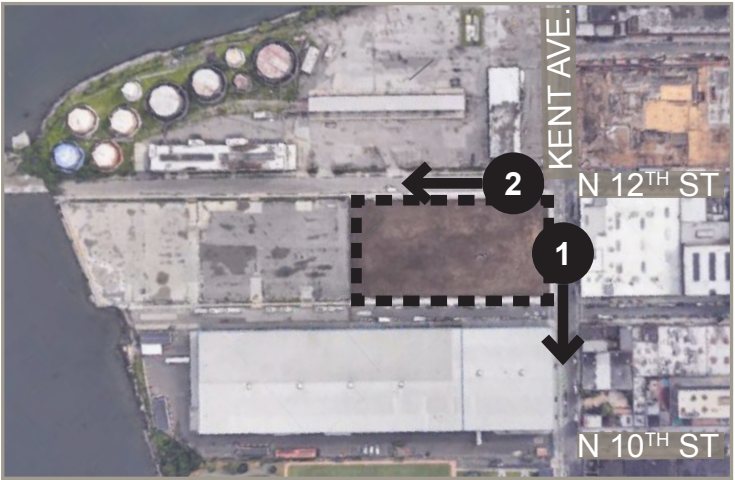




1 View south at Kent Avenue



2 View west at N 12th Street



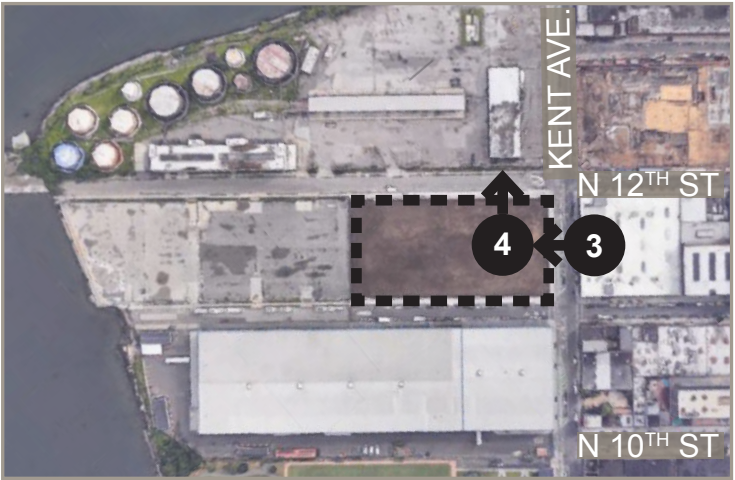
Key Plan



3 View west at Kent Avenue



4 View north at Kent Avenue



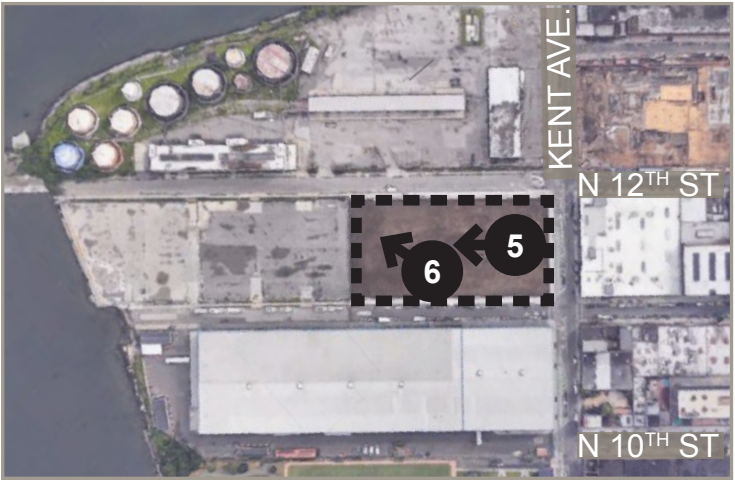
Key Plan



5 View west towards East River



6 View west towards East River



Key Plan



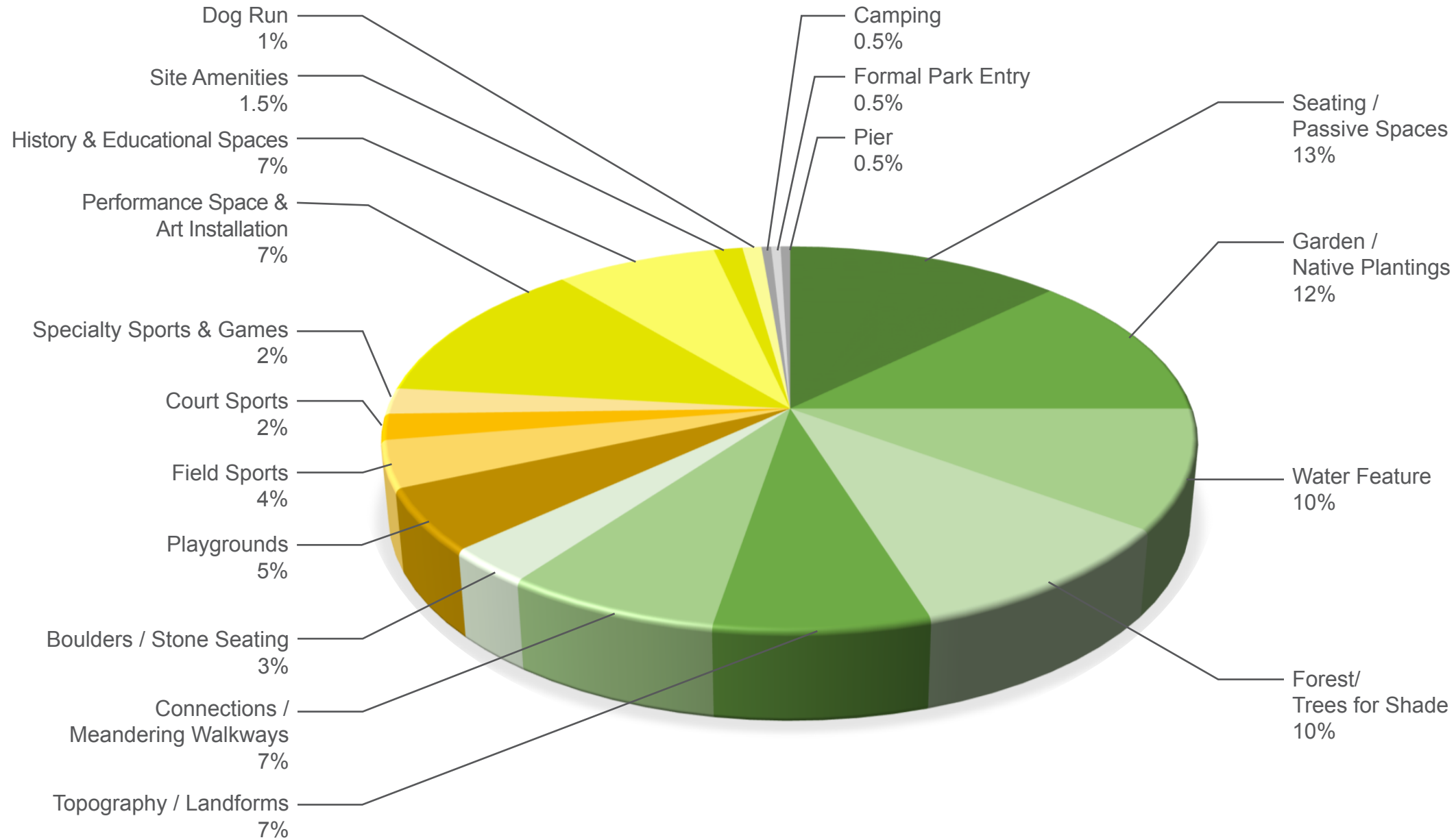
7 View west showing industrial lot



8 View east showing Kent Avenue developments



Key Plan



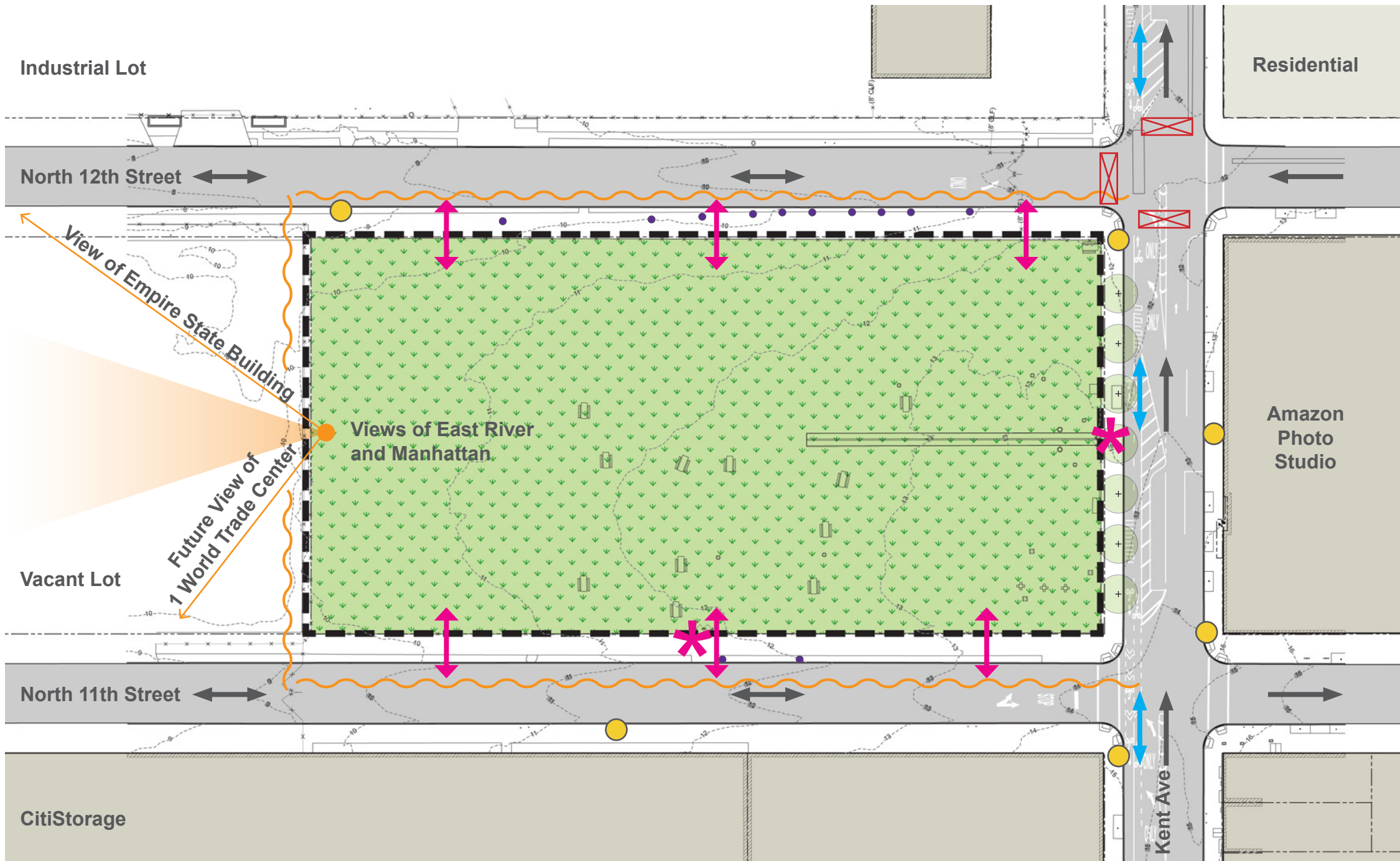
Summary

Passive	Seating/Passive Spaces	13%
	Garden/Native Plantings	12%
	Water Feature	10%
	Forest/Trees for Shade	10%
	Topography/Landforms	7%
	Connections/Meandering Walkways	7%
	Boulders/Stone Seating	3%

Active	Playgrounds	5%
	Field Sports	4%
	Court Sports	2%
	Specialty Sports & Games	2%

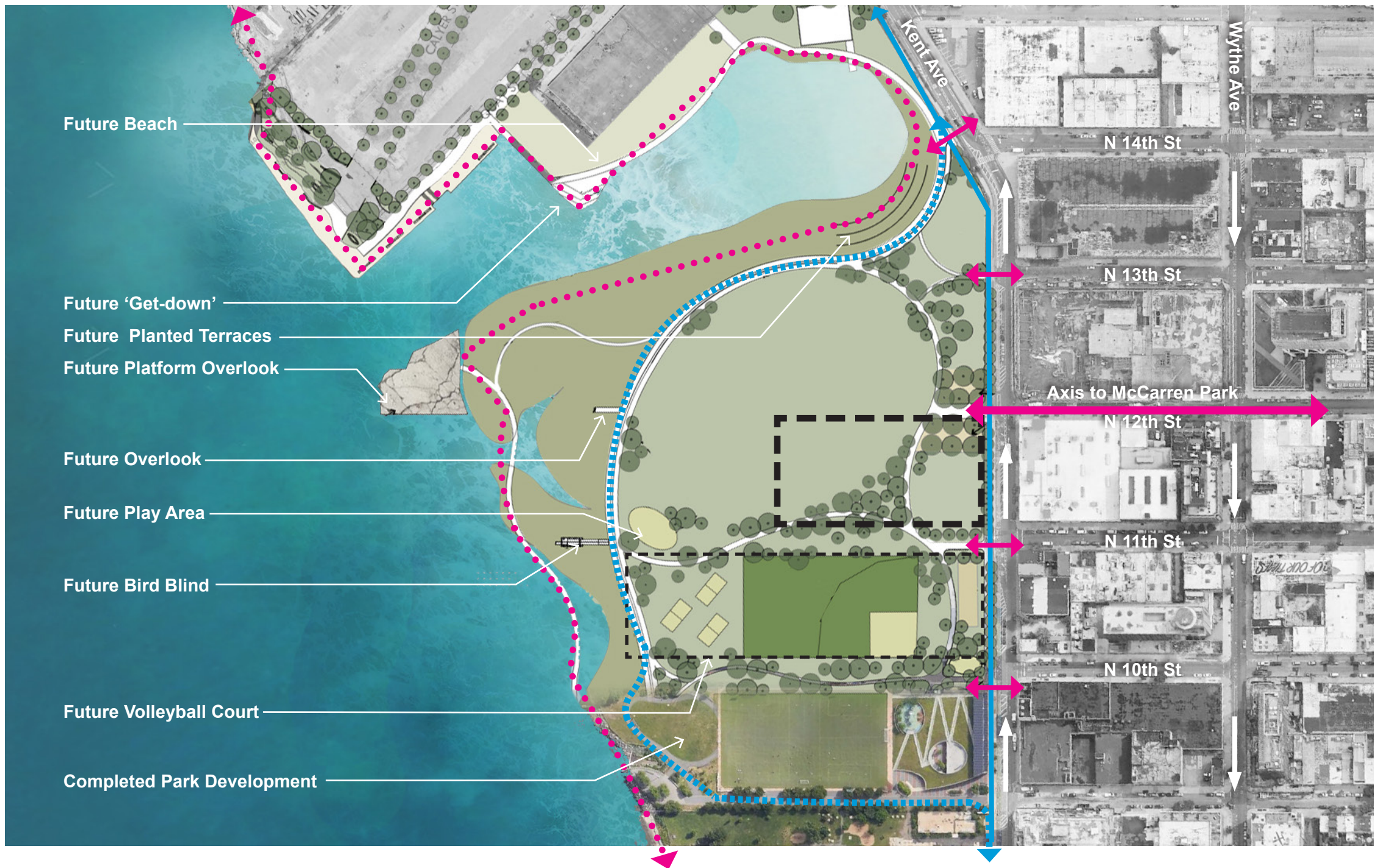
Amenities	Performance Space & Art Installation	12%
	History & Educational Spaces	7%
	Site Amenities	1.5%
	Dog Run	1%

Other	Camping	0.5%
	Formal Park Entry	0.5%
	Pier	0.5%



Legend

- Project Limit
- ✱ Park Entrance
- Building
- Future Building
- Asphalt Pavement
- Street Lightpole
- Vehicular Traffic Direction
- Bicycle Direction
- Existing Contour
- Existing Chain Link Fence
- No Cross Walk
- ↔ Future Connections
- Recovery Well
- View Shed
- Industrial View (temporary)
- Proposed Street Tree



Legend

- Project Limit
- Existing CitiStorage Footprint
- Vehicular Traffic
- Future Pedestrian Connection
- ... Future Shore Public Walkway
- Existing Bicycle Circulation
- Future Bicycle Circulation
- Future Youth Athletic Field
- Future Landscape Area
- Future Wetland
- Future Tree



Legend

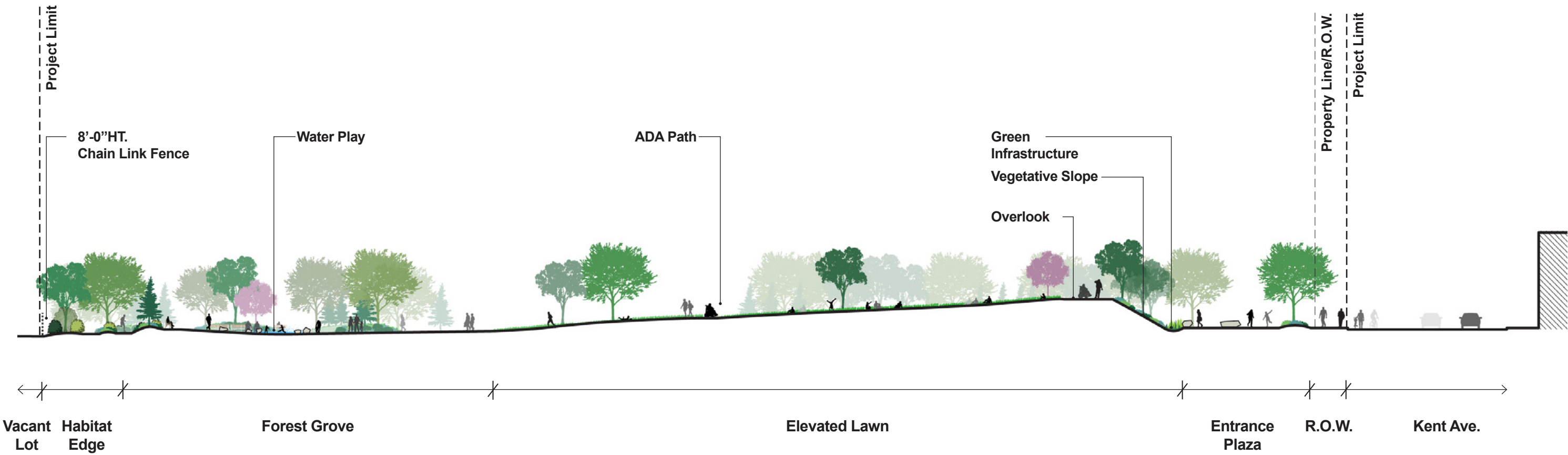
- Project Limit
- Vehicle Traffic
- Future Entry Node
- Future Pedestrian Connection
- ... Future Shore Public Walkway
- Existing Bicycle Circulation
- ... Future Bicycle Circulation
- Views to Maintain
- Future Athletic Field

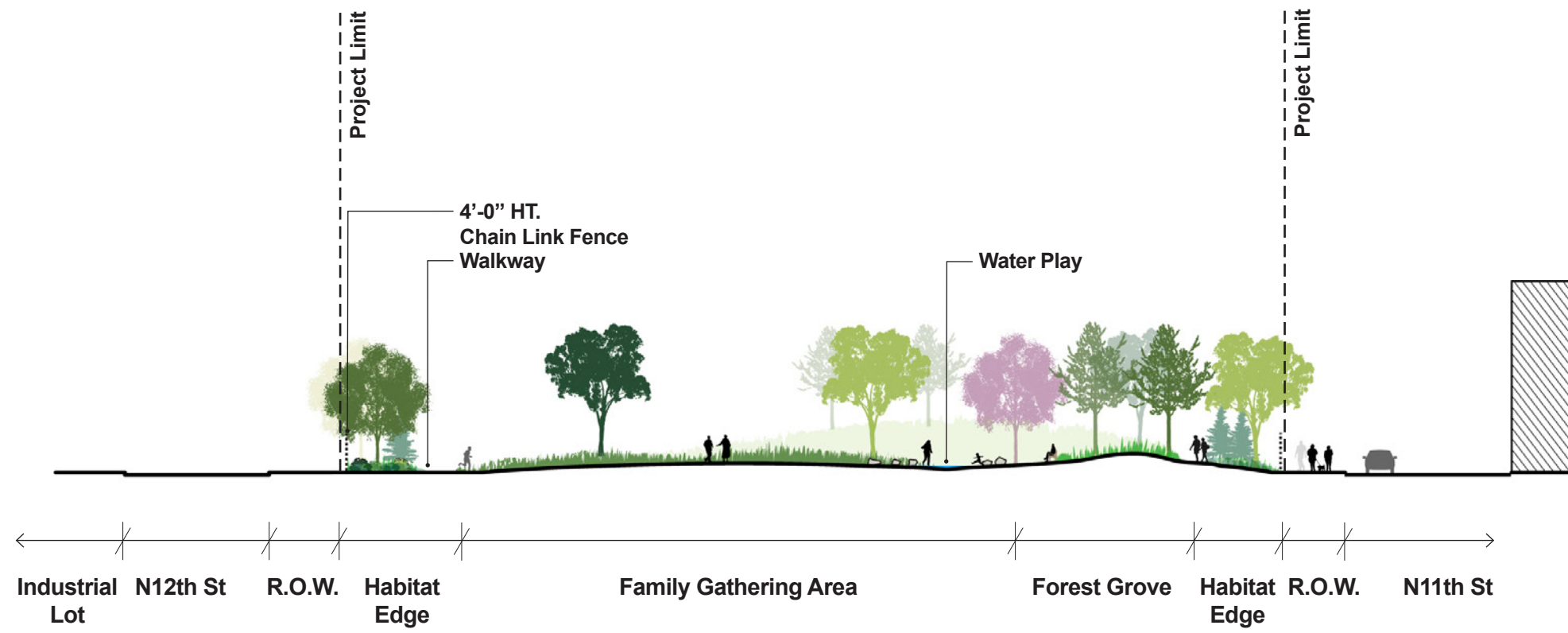


Legend

- Project Limit
- Property Line
- Chain Link Fence
- Future Connection
- Future Entrance
- Gated Entrance
- Lightpole
- Landscape Boulder
- 1964 World's Fair Bench
- Companion Seating
- Game Table and Benches
- Trash Receptacle
- Bike Rack
- Removable Bollards
- Cafe Table and Chairs
- Asphalt Block Paver
- Concrete Pavement
- Granite Unit Paver
- Canopy Tree
- Small Tree
- Evergreen Tree
- Flowering Tree

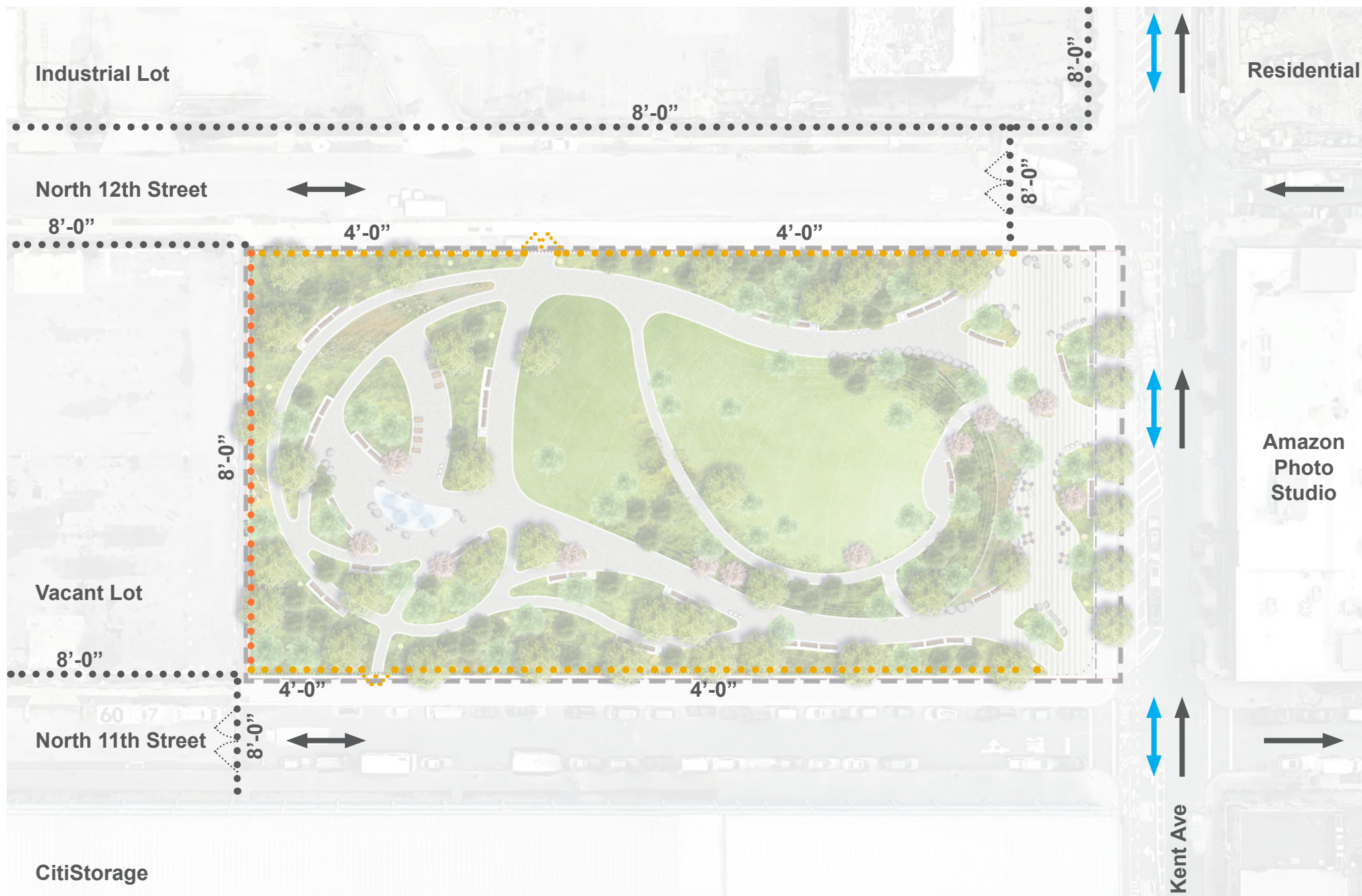












Legend

- Project Limit
- Property Line
- Vehicular Traffic Direction
- Bicycle Direction
- EXISTING FENCES (x = HEIGHT)
- ...^x... CLF
- TALL FENCES 8' HT. (x = HEIGHT)
- ...^x... CLF
- MEDIUM FENCES 4' HT. (x = HEIGHT)
- ...^x... CLF
- ... CLF GATE



Parks Standard

Bench Seating

Item: 1964 World's Fair bench with Integral Arms
 Manufacturer: Kenneth Lynch & Sons
 Material: Galvanized steel frame with RPL slats
 Color/Finish: Grey RPL



Parks Standard

Concrete and Steel Game Tables

Item: Concrete and Steel Game Table
 Manufacturer: Kenneth Lynch & Sons
 Material: Concrete table top with steel support
 Color/Finish: Concrete with graffiti resistant coating



Parks Standard

Trash Receptacle

Item: Public Space Trash Receptacle
 Manufacturer: Maglin Site Furniture
 Material:
 Color/Finish: Black/Blue/Green lids



Parks Standard

Hi-Lo Fountain and Water Bottle Filler

Item: 10145 SM-NYC
 Manufacturer: Most Dependable Fountains
 Material: Stainless Steel
 Color/Finish: Satin Finish



Parks Standard

Cafe Chairs

Item: Courtyard
 Manufacturer: Keystone Ridge Designs
 Material: Stainless Steel
 Color/Finish: Black Powdercoat



Master Plan Standard

Pedestrian Lighting

Item: Flushing Meadows Luminaire & Pole
 Manufacturer: Sentry Electric
 Material: Aluminum
 Color/Finish: Powder Coat RAL 9006 Matte/Silver



Master Plan Standard

Bike Rack

Item: Flo
 Manufacturer: Landscape Forms
 Material: Stainless Steel
 Color/Finish: Polished





Paving

Item: Asphalt Block Paver
 Manufacturer: Hanover
 Dimension: 6 x 12 x 3
 Color/Finish: Black Matrix 10 / Ground Finish



Edging

Item: Mountable Concrete Planter Curb at Lawn
 Dimension: 1'-0" wide
 Color/Finish: Unpigmented



Paving

Item: Granite Unit Paver
 Manufacturer: Hanover
 Dimension: 6 x 12 x 3
 Color/Finish: Ashford White / Thermal Flamed



Edging

Item: Item: Salvaged Granite Cobble



Water Play

Item: Granite Pavers and Boulders at Water Play
 Pavement Color: Ashford White



Landscape Boulders for Seating

TREES



Ginkgo biloba
Ginkgo



Liquidambar styraciflua
Sweetgum



Nyssa sylvatica
Blackgum

TREES



Magnolia virginiana
Sweetbay Magnolia



Quercus bicolor
Swamp White Oak



Zelkova serrata
Japanese Zelkova

SHRUBS/ GROUNDCOVER



Ajuga reptans
Bugleweed



Aronia arbutifolia
Red Chokeberry



Cornus sericea
Redtwig Dogwood



Myrica pensylvanica
Bayberry



Pennisetum alopecuroides
Fountain grass



Schizachyrium scoparium
Little Bluestem

SHRUBS/ GROUNDCOVER



Carex pennsylvanica
Pennsylvania Sedge



Illex crenata 'Helleri'
Dwarf Japanese Holly



Parthenocissus quinquefolia
Virginia Creeper



Schizachyrium scoparium
Little Bluestem



Vinca minor
Periwinkle

ENTRANCE PLAZA

LAWN AND VEGETATIVE SLOPE



Betula nigra
River Birch



Gleditsia triacanthos
Honeylocust



Juniperus virginiana
Eastern Red Cedar



Liquidambar styraciflua
Sweetgum



Pinus strobus
Eastern White Pine



Quercus bicolor
Swamp White Oak



Asclepias incarnata
Swamp Milkweed



Carex pensylvanica
Pennsylvania Sedge



Chasmanthium latifolium
Northern Sea Oats



Hypericum calycinum
St. John's wort



Myrica pensylvanica
Bayberry



Rhododendron sp.
Azaleas



Rhus aromatica
Fragrant Sumac



Rosa rugosa
Rugosa Rose



Schizachyrium scoparium
Little Bluestem



Betula nigra
River Birch



Gleditsia triacanthos
Honeylocust



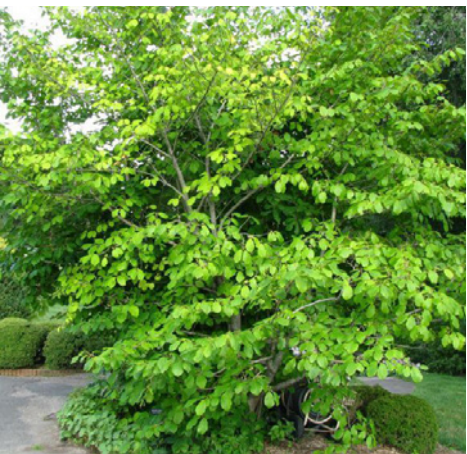
Juniperus virginiana
Eastern Red Cedar



Nyssa sylvatica
Blackgum



Quercus bicolor
Swamp White Oak



Hamamelis virginiana
Witch Hazel



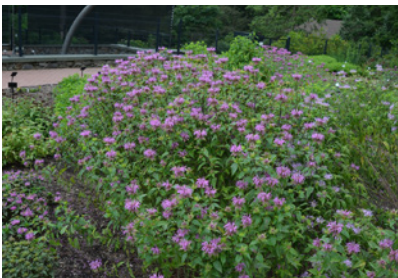
Asclepias incarnata
Swamp Milkweed



Carex pensylvanica
Pennsylvania Sedge



Chasmanthium latifolium
Northern Sea Oats



Monarda fistulosa
Bee Balm



Myrica pensylvanica
Bayberry



Pennisetum alopecuroides 'Hameln'
Dwarf fountain grass



Rhus aromatica
Fragrant Sumac



Schizachyrium scoparium
Little Bluestem



Spartina alternifolia
Smooth Cordgrass

HABITAT/ GREEN INFRASTRUCTURE